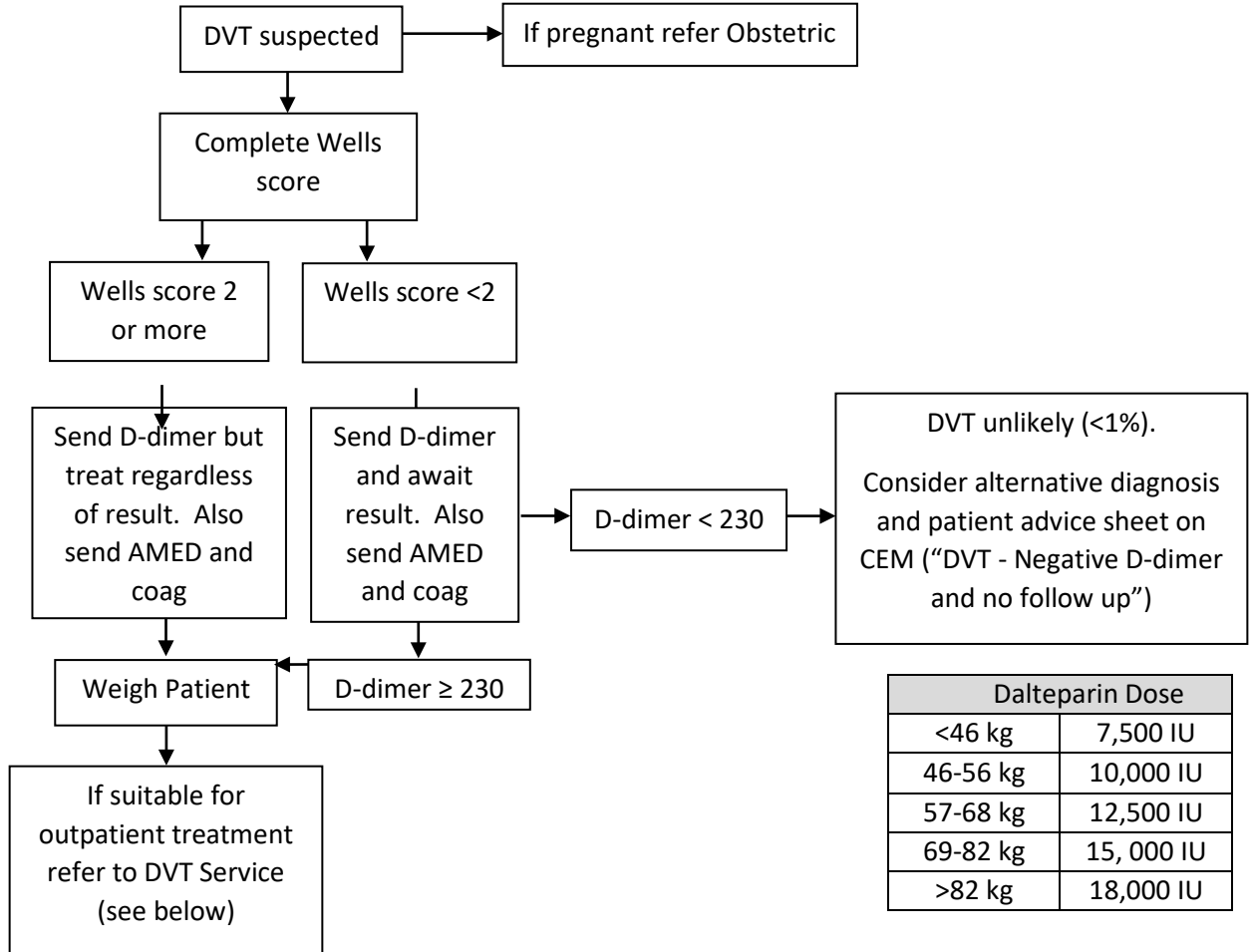


CLYDE EMERGENCY DEPARTMENT DVT PATHWAY



Dalteparin Dose	
<46 kg	7,500 IU
46-56 kg	10,000 IU
57-68 kg	12,500 IU
69-82 kg	15,000 IU
>82 kg	18,000 IU

RAH DVT Service (via MAU)
In Hours (Monday to Friday 0900-1630)
<ul style="list-style-type: none"> Call 06272
Out of Hours (1630-0900, or weekend)
<ul style="list-style-type: none"> Give Dalteparin if no contra-indication Request Doppler USS ("For ambulatory DVT service + Clinical information, Requestor details "MAU") Trak Referral to DVT service (click "New Request", then "Other", the "Ambulatory DVT Service") Discharge with patient advice sheet ("DVT Doppler follow up") Put notes in DVT box Patients are followed up by DVT service on next working day – at weekends TTO Apixaban 10mg bd is available (3 day supply)

IRH DVT Service (via J North)
In Hours (Monday to Friday 0800-1900)
<ul style="list-style-type: none"> Call 05325 or page 51148
Out of Hours (1900-0800, or weekend)
<ul style="list-style-type: none"> Give Dalteparin if no contra-indication Discharge with patient advice sheet (DVT Doppler follow up) Put notes in DVT box Patients are followed up by DVT service on next working day – at weekends TTO Apixaban 10mg bd is available (3 day supply)