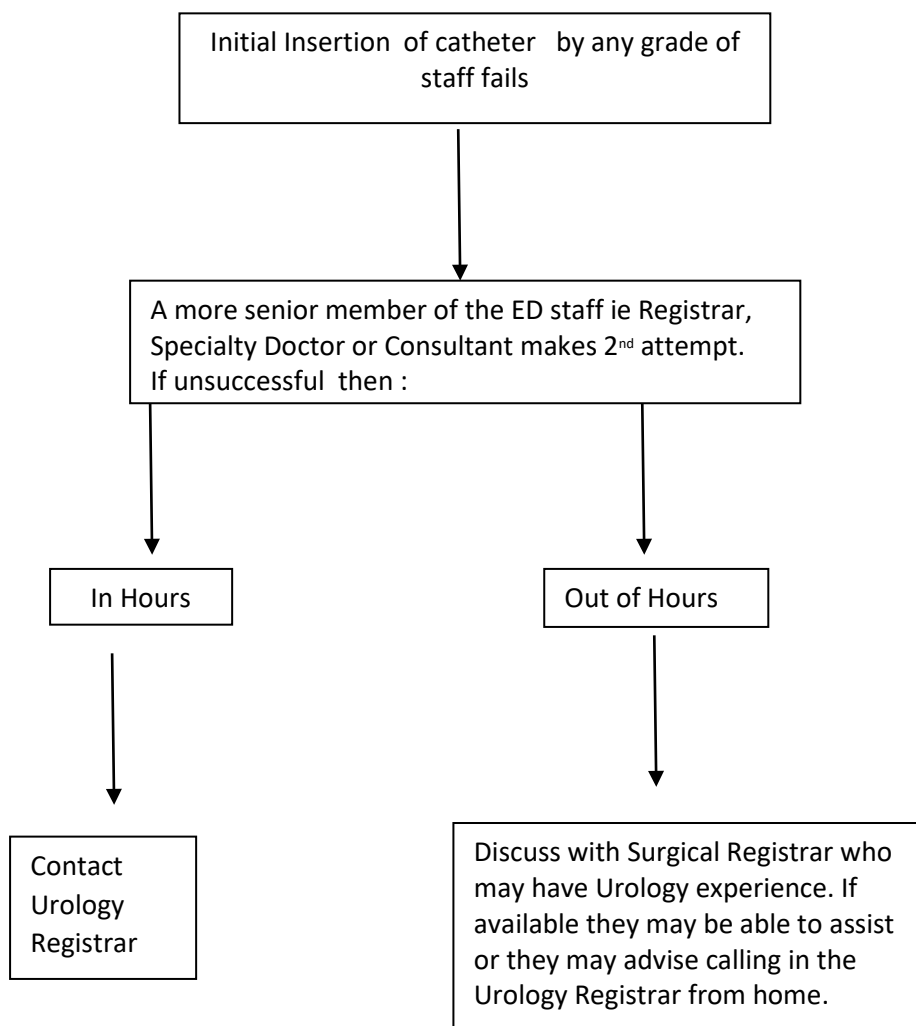


## Difficult Catheterisation in the Emergency Department

When a catheter is required in an Emergency situation, usually for an acute retention, in the Emergency Department there are a number of staff members fully trained to deal with this procedure. However there will inevitably be episodes when the insertion is difficult & may fail. In these cases we should ensure minimal discomfort for the patient while expediting the insertion by a more senior member of staff.

This diagram offers some simple guidance for both ED & Urology staff : -



***Please note, the Urology Consultant On Call must only be called if the Urology Registrar is not contactable or unable to attend.***