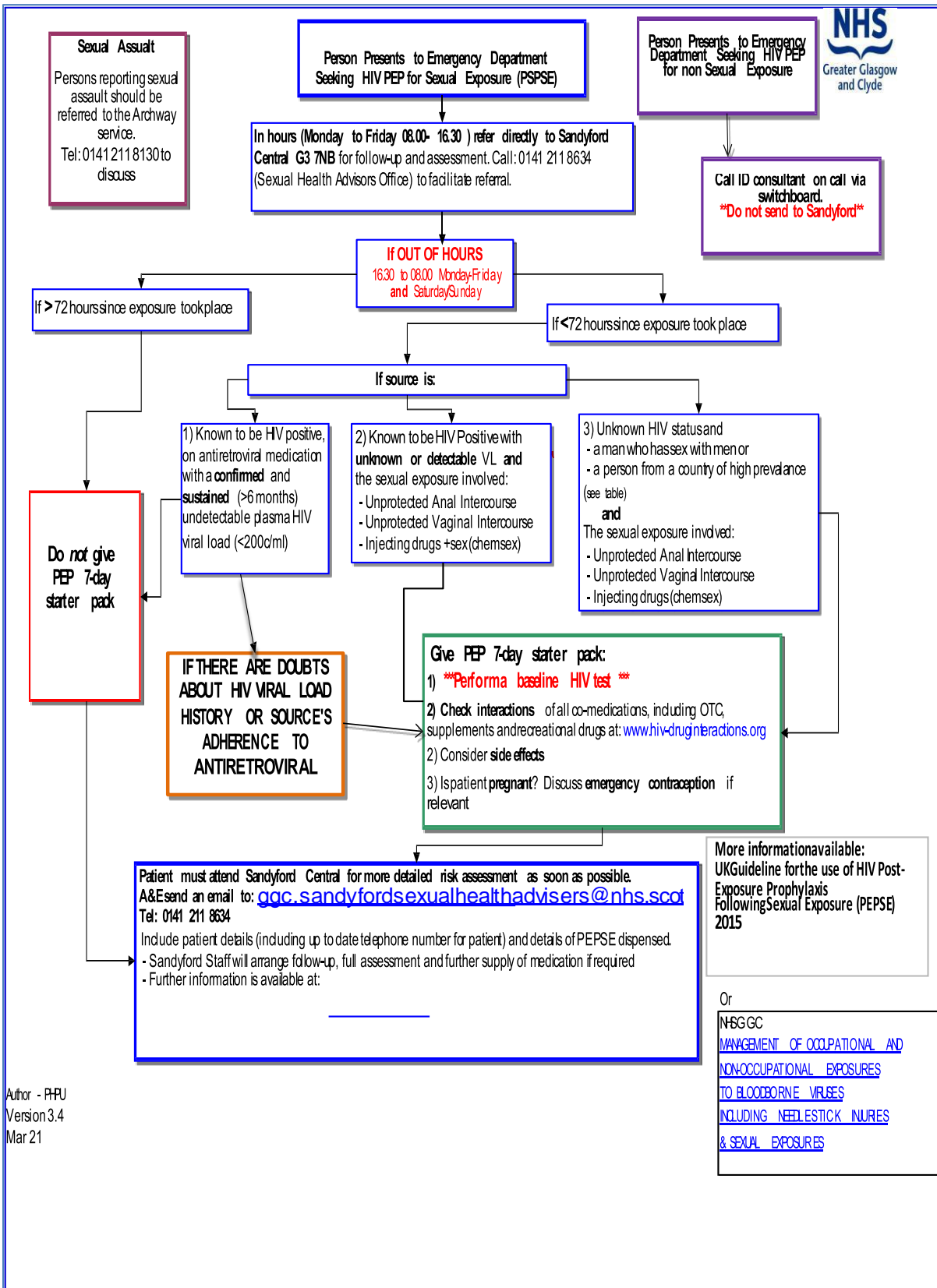


# PEP Decision Tree for ED



**List of High Hep B & HIV\* Prevalence Countries (Sources: Hep B - The Lancet 2015; HIV - UNAIDS Global Report 2018)**

E. Europe & Asia			Hep B >8% HIV ≥1%	
	Hep B >8%	HIV ≥1%		
Armenia	Y	-	Mauritius	Y 1.1*
Burma***	Y	-	Mozambique	Y 10.5
East Timor***	Y	-	Namibia	Y 13.3
Estonia	-	-	Niger	Y -
Georgia	Y	-	Nigeria	Y 3.1
Korea North	Y	-	Rwanda	Y 2.9
Kyrgyzstan	Y	-	Sao Tome & Principe	Y 1.4**
Laos	Y	-	Senegal	Y -
Mongolia	Y	-	Sierra Leone	Y 1.3
Russian Federation	-	1.4**	Somalia	Y -
Taiwan***	Y	-	South Africa	- 19.2
Thailand	Y	1.1	South Sudan	Y 2.5
Turkmenistan***	Y	-	Sudan	Y -
Ukraine	-	1	Swaziland	Y 28.8
Vietnam	Y	-	Togo	Y 2.4
Pacific			Uganda	Y 7.1
Kiribati	Y	-	United Rep. Of Tanzania	Y 4.7
Nauru	Y	-	Western Sahara***	Y -
Niue	Y	-	Zambia	- 12.9
Papa New Guinea	Y	-	Zimbabwe	Y 14.7
Solomon Islands	Y	-	Middle East	
Tonga	Y	-	Yemen	Y -
Vanuatu	Y	-	South America	
African Continent			Belize	- 1.5
Angola	Y	2.2	Guyana	- 1.5
Benin	Y	1.1	Suriname	- 1.1
Botswana	Y	22.2	Arctic and North America	
Burkina Faso	Y	1.0*	Baffin Island	Y -
Burundi	Y	1	Banks Island	Y -
Cameroon	Y	4.5	Canada (Around Hudson Bay or	Y -
Cape Verde	-	1	Greenland	Y -
Cent. African Rep.	Y	3.7	North West Territories	Y -
Chad	Y	2	Nunavut	Y -
Congo	Y	3**	Quebec (Around Hudson Bay or	Y -
Cote d'Ivoire	Y	3.2	Queen Elizabeth Islands (Some)	Y -
Dem. Rep. Congo	-	1.1*	Victoria Island	Y -
Djibouti	Y	1.6	Caribbean	
Equatorial Guinea	Y	4.9	Bahamas	- 3.2
Ethiopia	-	1.5**	Barbados	- 1.6
Gabon	Y	3.8	Dominican Republic	- 1
Gambia	Y	1.8	Haiti	Y 1.7
Ghana	Y	1.6	Jamaica	- 1.6
Guinea	Y	1.6	Trinidad & Tobago	- 1.2
Guinea-Bissau	Y	3.9**		
Kenya	-	5.9		
Lesotho	Y	22.7		
Liberia	Y	1.1		
Malawi	Y	9.1		
Mali	Y	1.3		
Mauritania	Y	-		

\* HIV prevalence estimates for 15-49 year olds (midpoint estimate used)  
 Please check original UNAIDS data table for risk groups and ranges  
[http://www.unaids.org/sites/default/files/media\\_asset/HIV\\_prevalence\\_from\\_1990-to\\_present.xlsx](http://www.unaids.org/sites/default/files/media_asset/HIV_prevalence_from_1990-to_present.xlsx)

\*\* High prev. HIV Countries consistently not included in HIV tables individually  
 (limited report Hepatitis data for Algeria, Bahrain, Botswana, Chad, Cyprus, Guinea-Bissau, Iraq, Kuwait, Laos/Da, Libyan Arab Jamahiriya, Mauritius, Oman, Qatar, Syrian Arab Republic, Sao Tome and Principe and United Arab Emirates)