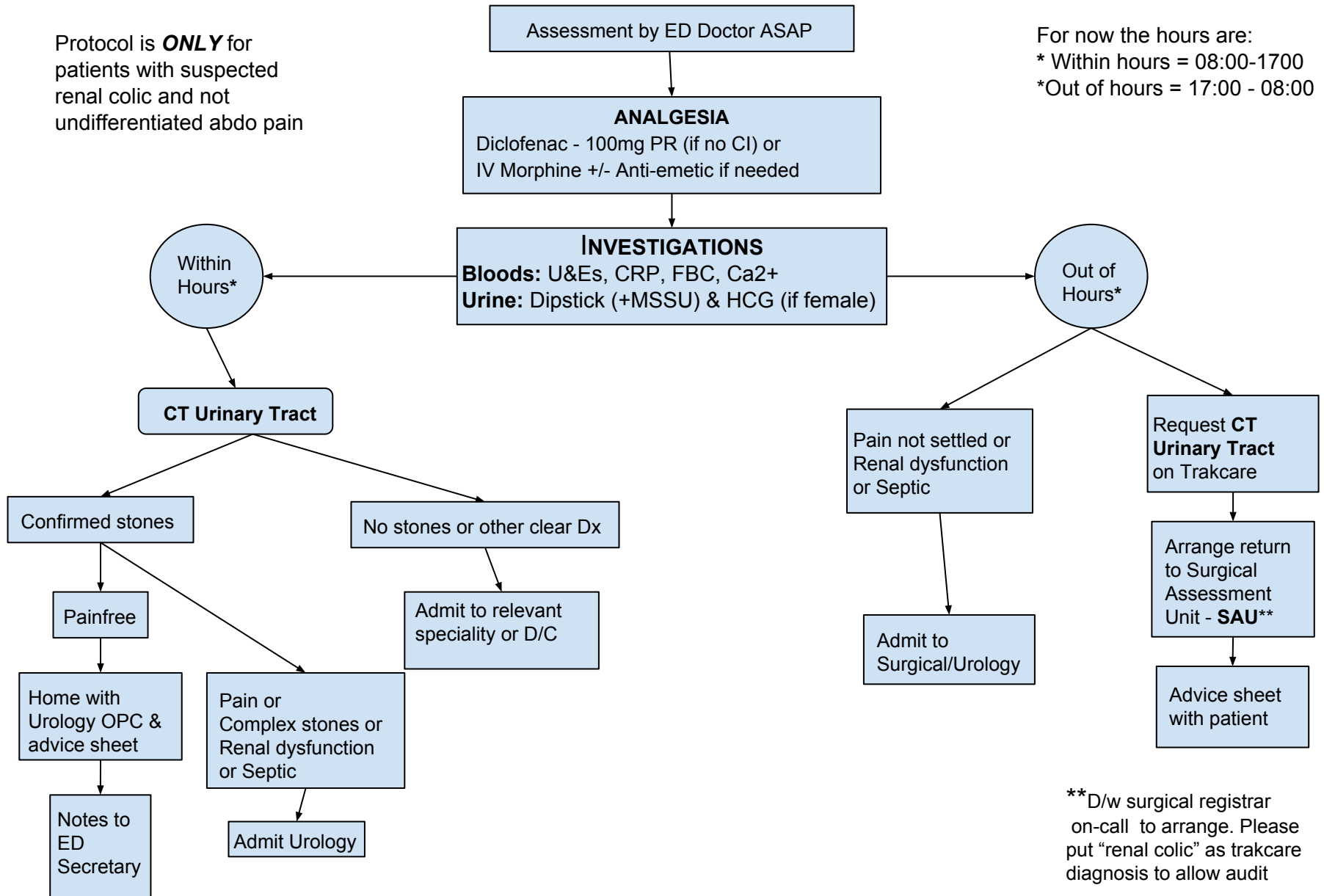


Management of Suspected Renal Colic in the Emergency Department

Protocol is **ONLY** for patients with suspected renal colic and not undifferentiated abdo pain

For now the hours are:
 * Within hours = 08:00-1700
 * Out of hours = 17:00 - 08:00



** D/w surgical registrar on-call to arrange. Please put "renal colic" as trakcare diagnosis to allow audit