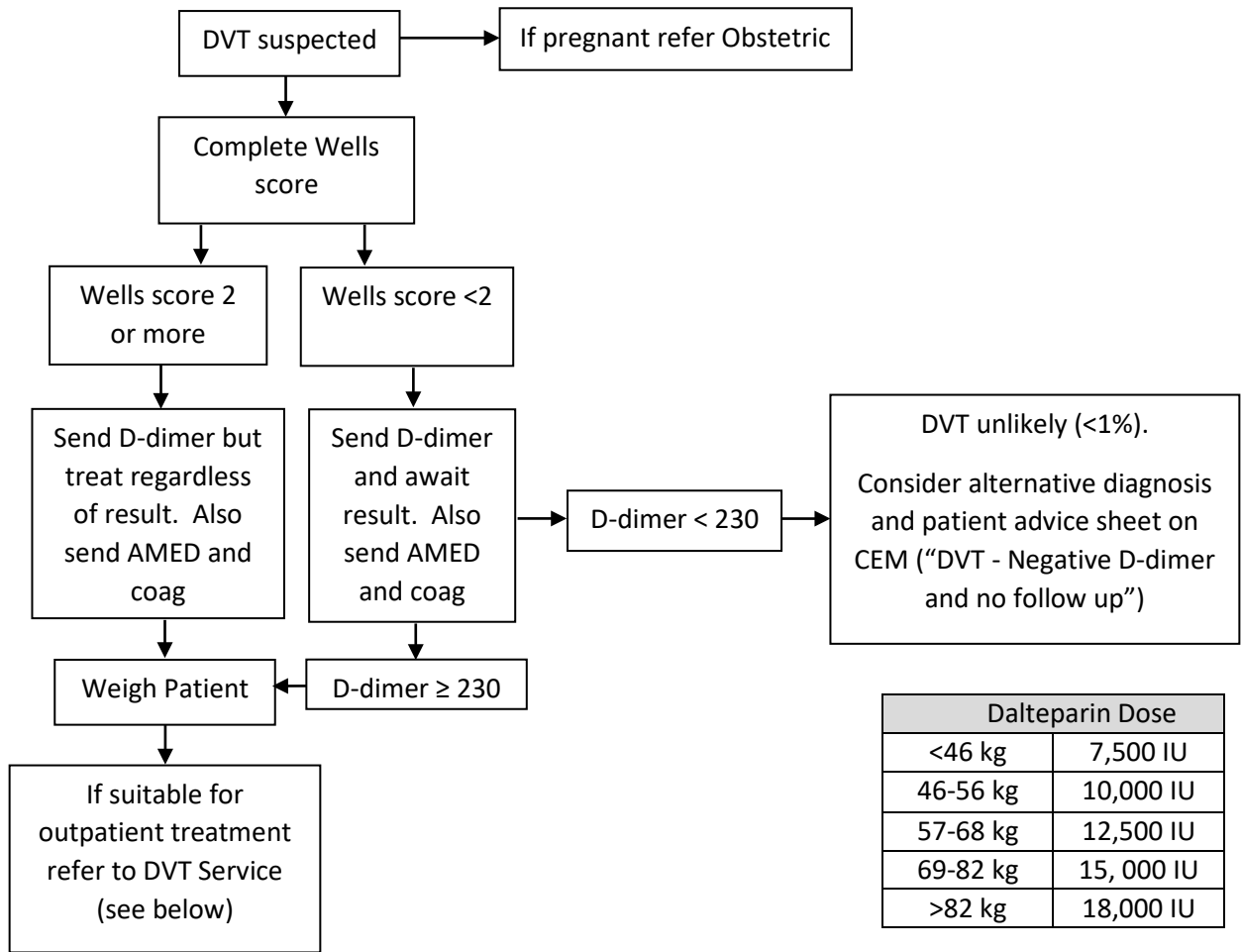


CLYDE EMERGENCY DEPARTMENT DVT PROFORMA



Sticky Label	Today's date: _____ Time: _____
History	
Examination	

		Two-level DVT Wells Score		
		Clinical Feature	Points	Score
Right Calf (cm)		Active cancer within 6 months	1	
Left Calf (cm)		Paralysis, paresis or recent plaster immobilisation of the lower extremities	1	
D - Dimer		Recently bedridden for 3 days or more or major surgery within 12 weeks requiring general or regional anaesthesia	1	
Patient Weight (kg)		Localised tenderness along the distribution of the deep venous system	1	
		Entire leg swollen – thigh \geq 3cm larger than asymptomatic side. (Measure thigh 10-15cm above patella)	1	
Temp		Calf swelling \geq 3 cm larger than asymptomatic side (Measure calf 10cm below tibial tuberosity)	1	
HR		Pitting oedema confined to the symptomatic leg	1	
BP		Collateral superficial veins (non-varicose)	1	
RR		Previously documented DVT	1	
SaO2		An alternative diagnosis is at least as likely as DVT (eg muscle strain, haematoma, cellulitis, ruptured bakers cyst, compartment syndrome) Note most patients with superficial thrombophlebitis need Doppler to rule out DVT (see CEM website guideline)	-2	
		Total Score		



RAH DVT Service (via MAU)
In Hours (Monday to Friday 0900-1630)
• Call 06272
Out of Hours (1630-0900, or weekend)
• Give Dalteparin if no contra-indication
• Request Doppler USS ("For ambulatory DVT service + Clinical information, Requestor details "MAU")
• Trak Referral to DVT service (click "New Request", then "Other", the "Ambulatory DVT Service")
• Discharge with patient advice sheet ("DVT Doppler follow up")
• Put notes in DVT box
• Patients are followed up by DVT service on next working day – at weekends TTO Apixaban 10mg bd is available (3 day supply)

IRH DVT Service (via J North)
In Hours (Monday to Friday 0800-1900)
• Call 05325 or page 51148
Out of Hours (1900-0800, or weekend)
• Give Dalteparin if no contra-indication
• Discharge with patient advice sheet (DVT Doppler follow up)
• Put notes in DVT box
• Patients are followed up by DVT service on next working day – at weekends TTO Apixaban 10mg bd is available (3 day supply)

Outcome (Please tick as appropriate)		
No follow up required	<input type="checkbox"/>	Doctors Signature
Referred to DVT Service	<input type="checkbox"/>	
• Dalteparin prescribed	<input type="checkbox"/>	Print Name
• Doppler requested	<input type="checkbox"/>	
• Trak Referral	<input type="checkbox"/>	

• sheet given	Patient advice	
Referred for inpatient Rx		