

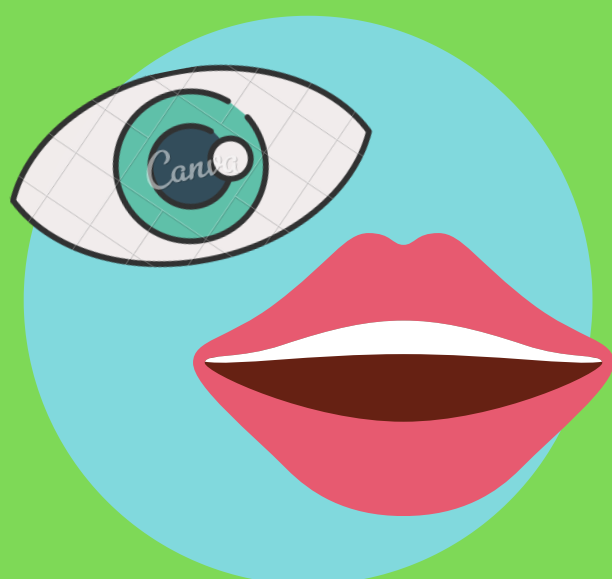
WHEN TO THINK TIA



LIMB WEAKNESS



FACIAL WEAKNESS



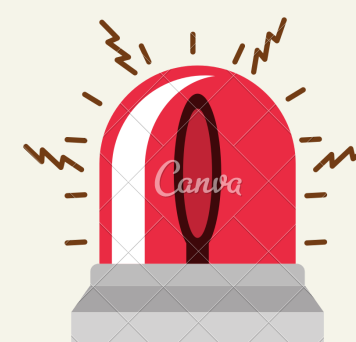
VISUAL OR SPEECH DISTURBANCE



<24 HOURS DURATION

IS THE PATIENT AT HIGH RISK OF STROKE?

- 2 OR MORE TIA'S WITHIN 1 WEEK?
- ABCD2 SCORE OF 6 OR MORE?



ABCD2 SCORE

RISK FACTOR	SCORE
Age \geq 60	1
BP \geq 140/90	1
UNILATERAL WEAKNESS	2
SPEECH DISTURBANCE ONLY	1
DURATION \geq 60 MINS	2
DURATION 10-59 MINS	1
DIABETES	1

TIA

TRANSIENT ISCHAEMIC ATTACK MANAGEMENT

HIGH RISK OF STROKE



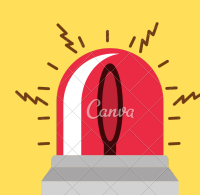
ADMIT TO STROKE UNIT

LOW RISK OF STROKE

DISCHARGE HOME IF:



- GCS 15/15
- NO HEADACHE/CONFUSION
- NO FLUCTUATING SYMPTOMS
- BP >100/60 AND <200/130
- NOT IN AF
- NOT ON ANTICOAGULANTS
- SAFE SWALLOW
- SAFE MOBILITY



CHECKLIST FOR GOING HOME



REFER TO TIA CLINIC



GIVE ASPIRIN 300MG SINGLE DOSE, THEN CLOPIDOGREL 75MG DAILY UNTIL CLINIC



MAKE SURE THEY HAVE HAD AN ECG, BM, FBC, U&E'S, LFTS AND LIPID PROFILE



ADVISE TO NOT DRIVE FOR 1 MONTH