

TOOTH AVULSION

Def.: complete displacement of a tooth from its socket, considered serious injury

Management



Confirm that the tooth has been **stored in milk**, saline or saliva or it has been **less than 60 min of unsuitable storage**



Apply **local anaesthetic**



Clean the tooth with saline or chlorhexidine, handling only by the crown, look for fragments and **irrigate socket** with saline



Re-implant the tooth and **suture any gingival lacerations**. Apply **flexible splint** for up to 2 weeks.



Check **tetanus** protection, consider **antibiotics**, x-ray if missing teeth or teeth fragments and discuss with your consultant

Discharge advice

Avoid participation in contact sports

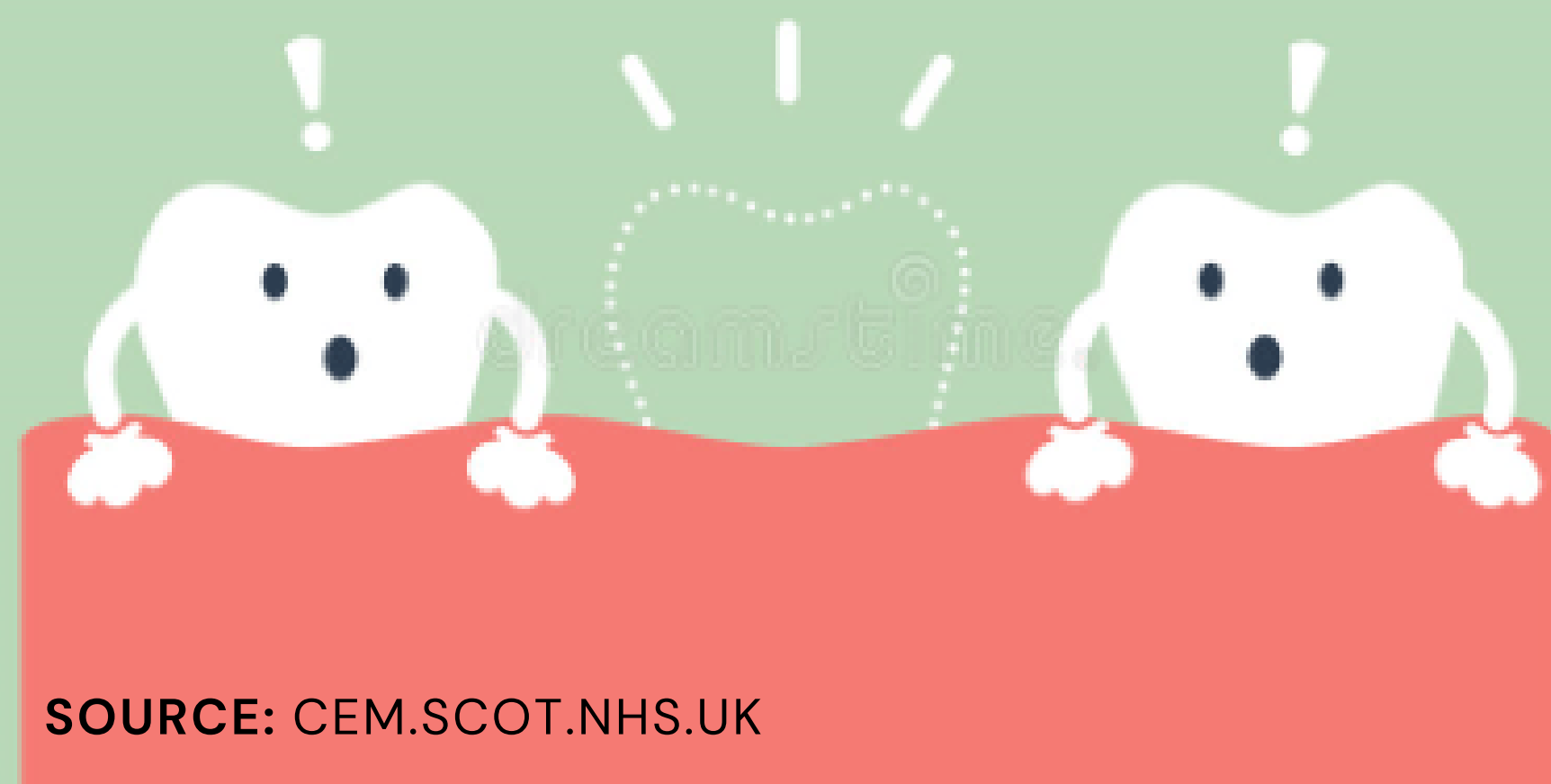
Soft diet for upto 2 weeks

Use soft toothbrush after every meal

Use an antiseptic mouth rinse 2x a day for 1 week

Referrals

- If outwith 60 minutes window or suspected unviable tooth: refer to dentist
- If no facial fractures: refer to patient's own dentist
- if facial fractures: refer to MaxFax surgeons
- Dental hospital no: 0141 211 9618



SOURCE: CEM.SCOT.NHS.UK